



# 5609 ENTERPRISE 5628



## 5609 ENTERPRISE 5628 Model number: 57ENT28563AH19

**3 beds • 2 baths • 1568 sq.ft. • 28' width • 56' depth**

Our home building facilities invest in continuous product and process improvements. Plans, dimensions, features, materials, specifications and availability are subject to change without notice or obligation. Renderings and floor plans are representative likenesses of our homes and may differ from the actual homes. We invite you to tour a Home Center near you and inspect the highest value in quality housing available or call (252) 316-8245 to speak with a Home Consultant. Copyright 2017, CMH. All rights reserved.

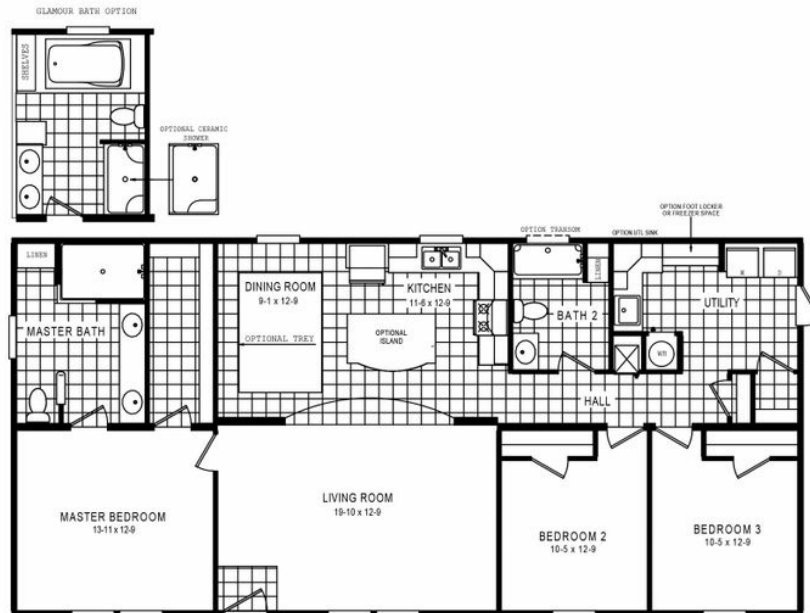
<https://www.oakwoodhomesrockymount.com>

### OAKWOOD HOMES- ROCKY MOUNT

1390 N WESLEYAN BLVD  
ROCKY MOUNT, NC 27804

Monday - Thursday: 9am - 6pm  
Friday: 9am - 6pm  
Saturday: 9am - 5pm  
Sunday: Closed

(252) 316-8245

**5609 ENTERPRISE 5628** Model number: 57ENT28563AH19**3 beds • 2 baths • 1568 sq.ft. • 28' width • 56' depth**

Our home building facilities invest in continuous product and process improvements. Plans, dimensions, features, materials, specifications and availability are subject to change without notice or obligation. Renderings and floor plans are representative likenesses of our homes and may differ from the actual homes. We invite you to tour a Home Center near you and inspect the highest value in quality housing available or call (252) 316-8245 to speak with a Home Consultant. Copyright 2017, CMH. All rights reserved.

<https://www.oakwoodhomesrockymount.com>

**OAKWOOD HOMES-  
ROCKY MOUNT****1390 N WESLEYAN BLVD  
ROCKY MOUNT, NC 27804****Monday - Thursday: 9am - 6pm  
Friday: 9am - 6pm  
Saturday: 9am - 5pm  
Sunday: Closed****(252) 316-8245**