



THE NEW BREEZE II



THE NEW BREEZE II Model number: 29SSP28764AH20

4 beds • 2 baths • 2128 sq.ft. • 28' width • 76' depth

Our home building facilities invest in continuous product and process improvements. Plans, dimensions, features, materials, specifications and availability are subject to change without notice or obligation. Renderings and floor plans are representative likenesses of our homes and may differ from the actual homes. We invite you to tour a Home Center near you and inspect the highest value in quality housing available or call (252) 316-8245 to speak with a Home Consultant. Copyright 2017, CMH. All rights reserved.

<https://www.oakwoodhomesrockymount.com>

OAKWOOD HOMES- ROCKY MOUNT

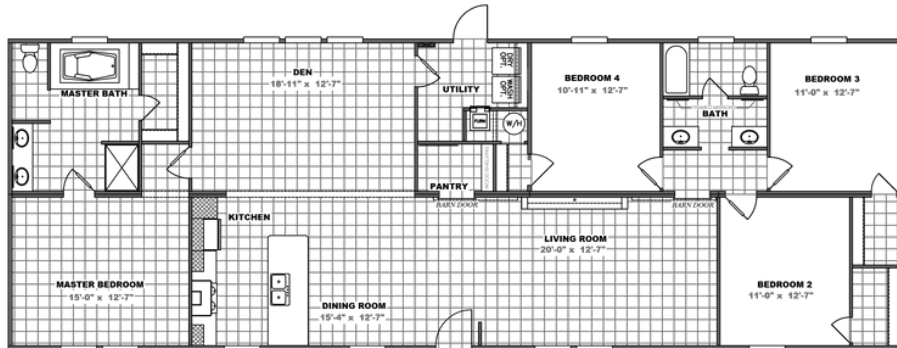
1390 N WESLEYAN BLVD
ROCKY MOUNT, NC 27804

Monday - Thursday: 9am - 6pm
Friday: 9am - 6pm
Saturday: 9am - 5pm
Sunday: Closed

(252) 316-8245



THE NEW BREEZE II



THE NEW BREEZE II Model number: 29SSP28764AH20

4 beds • 2 baths • 2128 sq.ft. • 28' width • 76' depth

Our home building facilities invest in continuous product and process improvements. Plans, dimensions, features, materials, specifications and availability are subject to change without notice or obligation. Renderings and floor plans are representative likenesses of our homes and may differ from the actual homes. We invite you to tour a Home Center near you and inspect the highest value in quality housing available or call (252) 316-8245 to speak with a Home Consultant. Copyright 2017, CMH. All rights reserved.

<https://www.oakwoodhomesrockymount.com>

OAKWOOD HOMES- ROCKY MOUNT

1390 N WESLEYAN BLVD
ROCKY MOUNT, NC 27804

Monday - Thursday: 9am - 6pm
Friday: 9am - 6pm
Saturday: 9am - 5pm
Sunday: Closed

(252) 316-8245